



## AmosConnect 7.4 and IsatPhone Pro Data service Setup guide

This factsheet will explain the steps necessary to use AmosConnect 7.4 over the IsatPhone Pro Data service.

### Step 1: Install Modem drivers

Connect your IsatPhone Pro handheld and install the modem drivers as per the instructions provided on the IsatPhone Pro Installation CD.

The latest firmware and drivers can be downloaded from:

<http://www.inmarsat.com/Services/Land/IsatPhone/>

### Step 2: Identify COM-port

Identify the modem COM port to which your phone is connected for the data service. The COM port number will be needed when you are using your data application. To do this, on your PC go to **Control Panel > Phone and Modem Options** and select the **Modem** tab. You will see **IsatPhone Pro Modem** and the COM port e.g. COM6.

Or, go to **Control Panel > System** and select the **Hardware** tab. Click on **Device Manager** and scroll down to **Modems**. If your USB drivers are installed you will see **IsatPhone Pro Modem**. Right click on the **IsatPhone Modem** and select **Properties**. You will see the COM port e.g. COM6.

### Step 3: Configure AmosConnect

To configure the IsatPhone Pro for AmosConnect, simply add it as a new terminal. To do this, go to **Remote -> Modem Services** and click **Add**.

In the Add New Modem Device screen select the **Unlisted Modem** from the Modem dropdown.



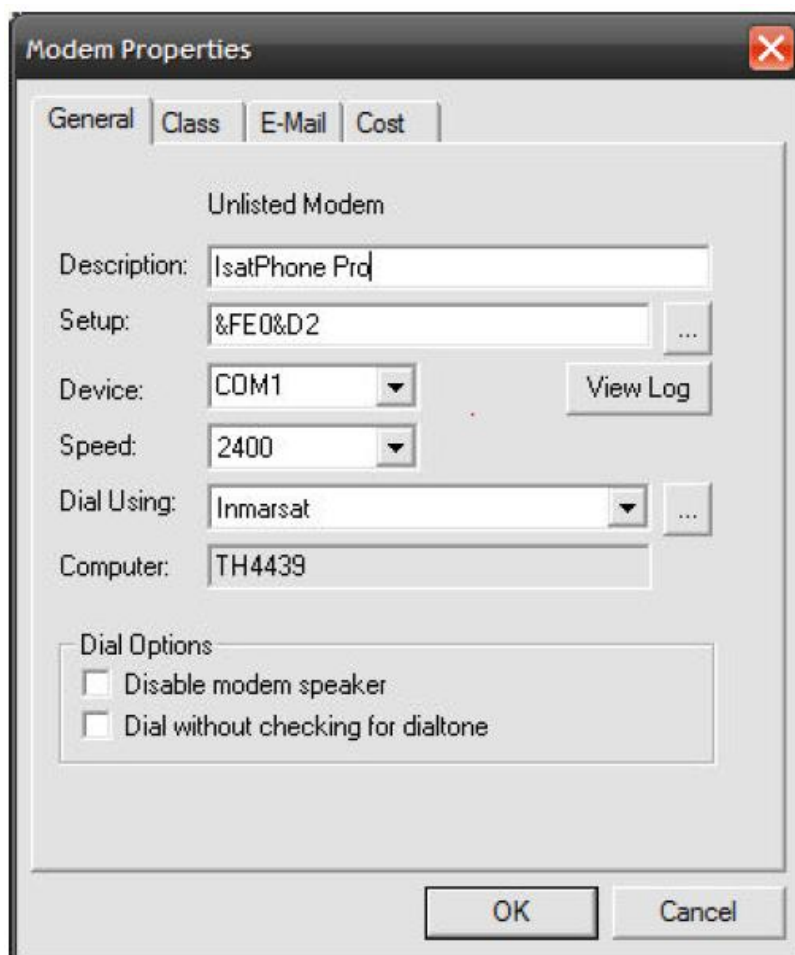


For Device, select the COM-port as identified in **step 2**.

After clicking OK you will be back in the Modem Devices screen. Here select the newly added Modem and click **Details**.

For easy reference, type a suitable name in the Description field.

For Setup, type in the following Modem Steup String: **&FE0&D2**



#### Step 4: Connect!

You are now done setting up the terminal.

To dial out using the IsatPhone Pro, simply select the new terminal from the dropdown in the Dial screen.