



INMARSAT FLEETPHONE and ISATPHONE LINK

Land & Maritime Fixed Phones

Oceana terminals for maritime applications and Terra terminals for land applications are a low-cost, phone system that operates over the Inmarsat GSPS network interface (GMR2+ Inmarsat-4 Satellite Network). Both Oceana 800 and Terra 800 allows the flexibility of using a privacy mode handset built in to the terminal and all four units have RJ11/POTS connectivity, supporting cable runs of up to 600m.



FleetPhone / IsatPhone Link is a low-cost, fixed-line satellite phone service for maritime satellite phone service and people based in rural or remote areas outside of cellular coverage and deployable anywhere in the world.

Designed for indoor or outdoor use, you can set up IsatPhone Link within minutes to provide crystal-clear and reliable telephone calling. Also ideal for emergency and back-up communications.

FleetPhone is a global, fixed solution for vessels where the primary requirement is for voice communication or where additional voice lines are needed.



OCEANA 800

The Oceana 800 is designed to operate on the Inmarsat "Fleet Phone" service.

Oceana 800 is an all-in-one specifically designed IP54 maritime communications terminal that can be utilized in a wide variety of marine applications throughout the world supporting Instant tracking messages / periodical tracking updates, RJ11 / POTS connectivity for using standard telephone handsets and PABX integration, along with inbuilt speaker phone and privacy handset.



Sectors

- Commercial Fishing
- Cargo
- Work Boat
- Leisure

Applications

- Crew Calling
- Captain Calling
- PABX Integration

Specialised Design

- IP54 Certified enclosure
- Colour LCD Screen
- Compact all in one design
- Wall or Desk mounting options
- Security bolt for wall mounting
- USB Data access
- In built speaker phone
- Dual SIM card enclosures
- Status LED
- Integrated antenna connection
- Cable routing LHS / TOP or Bottom

Intelligent POTS / RJ11 interface

- Supports up to 600m (1800') of RJ11 cable
- Dial, ring & busy tones
- Integrate easily to PABX System
- Support standard corded / cordless phones
- Auto-dial & speed dials available
- Supports up to 5 standard corded handsets

Voice Calling Features

- Integrated easy to use phone book
- Bluetooth headsets supported (not included)
- Hands Free Speaker Phone
- In-built Active Privacy Handset
- Speaker button auto answer
- Secondary & overriding accessible SIM Port

Instant Message/ Tracking Functionality

- Dedicated internal GPS receiver
- Messages via SMS, SMS to Email
- Periodic location updates
- Remote Polling via SMS
- Manual position update on single button press
- 2 button press for Instant priority messages

Quality

- 100% factory tested
- 12 month warranty
- Fully certified, Inmarsat, RoHS, CE, EMC, IP54, C Tick

Physical Dimensions

- 241 x 185 x 93mm
- Operating Range: -20°C to +55°C
- Storage: -30°C to +80°C
- Humidity: <- 75% RH



Antenna Included

- . Beam Active Maritime antenna
- . Inmarsat / GPS - ISD710

Power

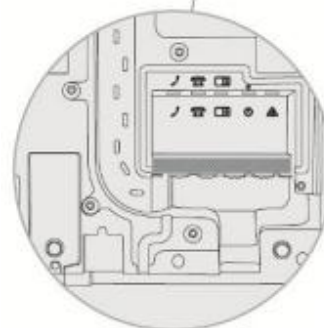
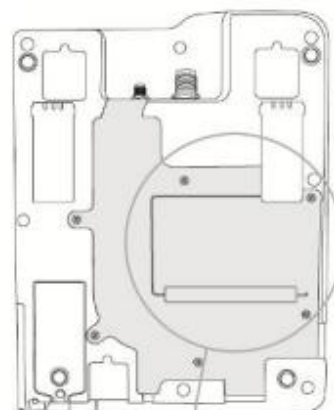
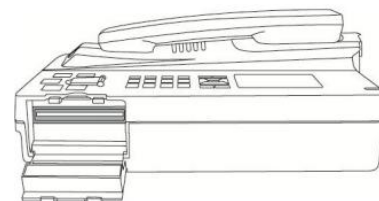
- . Supports 10 – 32V DC power Input
- . Supplied with 110/240V AC Plug pack

Cable Kits Available

- . 6m / 13m / 18.5m / 31m / 40m – Stock cable kits
- . 50m / 60m / 70m / 80m / 90m / 100m – Special Order

What's in the Box

- . Oceana 800
- . ISD 710 Antenna
- . 110-240v AC Plug Pack (kettle cord not included)
- . 10-32v DC power lead
- . Desk mounting hand up cup
- . (wall mounting hang up cup supplied fitted)
- . 2m alarm loop wiring
- . Wall mounting plate
- . USB cable
- . User Manual / Quick Start guide





OCEANA 400

The Oceana 400 is designed to operate on the Inmarsat "Fleet Phone" service.

Oceana 400 is a slim line terminal has been purposely designed for use in maritime applications where the simplest access to reliable voice and data communications services is required. Featuring an intelligent RJ11/POTS interface enabling corded/cordless phones or integration to a PABX system, and inbuilt intelligence to support standard ring, busy and dial tones. Oceana 400 includes, a high quality IP53 rated enclosure USB data access and is wall mountable,



Sectors

- ▶ Leisure
- ▶ Cargo
- ▶ Cost conscious fishing

Applications

- ▶ Crew Calling
- ▶ Back up communications
- ▶ PABX Integration

Specialised Design

- IP53 Certified enclosure
- (When wall mounted)
- Compact all in one design
- Wall or Desk mounting options
- USB Data access
- Rear SIM card enclosure
- Status LED Registration / Signal / Call
- Integrated antenna connection

Intelligent POTS / RJ11 interface

- Supports up to 600m (1800') of RJ11 cable
- Dial, ring & busy tones
- Integrate easily to PABX System
- Support standard corded / cordless phones
- Auto-dial & speed dials available
- Supports up to 5 standard corded handsets

Voice Calling Features

- Integrated easy to use phone book
- Bluetooth headsets supported (not included)
- Hands Free Speaker Phone
- In-built Active Privacy Handset
- Speaker button auto answer
- Secondary & overriding accessible SIM Port

Quality

- 100% factory tested
- 12 month warranty
- Fully certified, Inmarsat, RoHS, CE, EMC, IP53 & C Tick

Physical Dimensions

- 240 x 190 x 53mm
- Operating Range: -20°C to +55°C
- Storage: -30°C to +80°C
- Humidity: <- 75% RH



Antenna Included

- . Beam Active Maritime antenna
- . Inmarsat / GPS - ISD710

Power

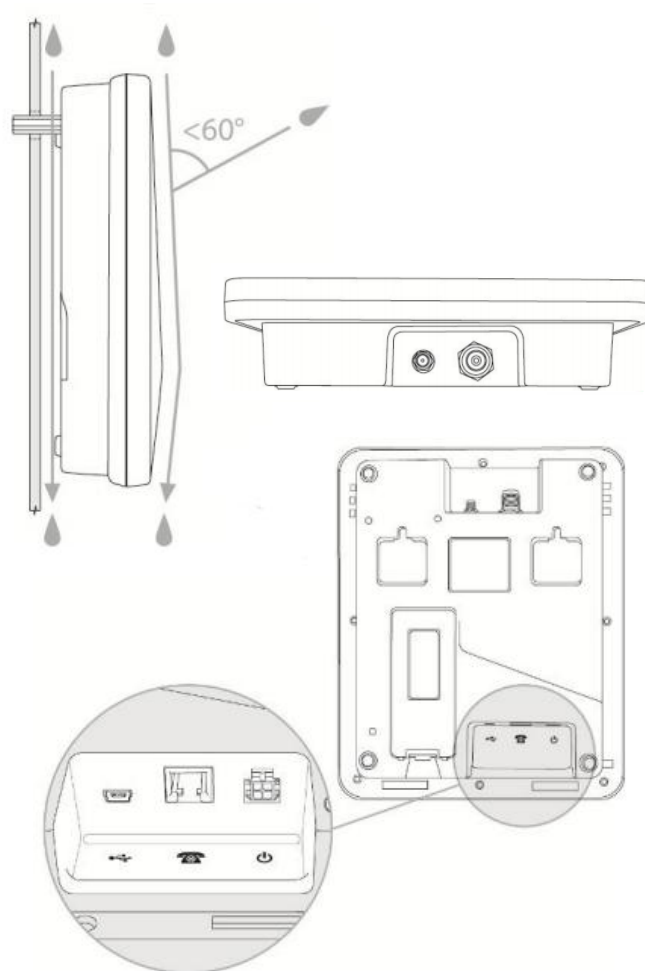
- . Supports 10 – 32V DC power Input
- . Supplied with 110/240V AC Plug pack

Cable Kits Available

- . 6m / 13m / 18.5m / 31m / 40m – Stock cable kits
- . 50m / 60m / 70m / 80m / 90m / 100m – Special Order

What's in the Box

- . Oceana 400
- . ISD 710 Antenna
- . 110-240v AC Plug Pack (kettle cord not included)
- . 10-32v DC power lead
- . Wall mounting plate
- . USB cable
- . User Manual / Quick Start guide





TERRA 800

The Terra 800 is designed to operate on the Inmarsat "Link Phone" service.

Terra 800 is an all-in-one specifically designed communications terminal that can be utilized in a wide variety of land based applications as a dedicated telephone service or a back up emergency telephone system throughout the world. Featuring an intelligent RJ11/POTS interface to enable integration to a PABX system, supports standard ring, busy and dial tones to the user.



Sectors & Applications

- NGO
- Remote / Communities / Offices / farms
- Emergency / Disaster recovery
- Mining
- Priority / Interim Services
- In Building

Specialised Design

- IP54 Certified enclosure
- Colour LCD Screen
- Compact all in one design
- Wall or Desk mounting options
- Security bolt for wall mounting
- USB Data access
- In built speaker phone
- Dual SIM card enclosures
- Status LED
- Integrated antenna connection
- Cable routing LHS / TOP or Bottom

Intelligent POTS / RJ11 interface

- Supports up to 600m (1800') of RJ11 cable
- Dial, ring & busy tones
- Integrate easily to PABX System
- Support standard corded / cordless phones
- Auto-dial & speed dials available
- Supports up to 5 standard corded handsets

Voice Calling Features

- Voice Calling Features
- Integrated easy to use phone book
- Bluetooth headsets supported (not included)
- Hands Free Speaker Phone
- In-built Active Privacy Handset
- Speaker button auto answer
- Secondary & overriding accessible SIM Port

Quality

- 100% factory tested
- 12 month warranty
- Fully certified, Inmarsat, RoHS, CE, EMC, IP54 & C Tick

Physical Dimensions

- 241 x 185 x 93mm
- Operating Range: -20°C to +55°C
- Storage: -30°C to +80°C
- Humidity: <- 75% RH



Antenna Included

- . Beam Passive Fixed Land antenna
- . Inmarsat / GPS - ISD700

Power

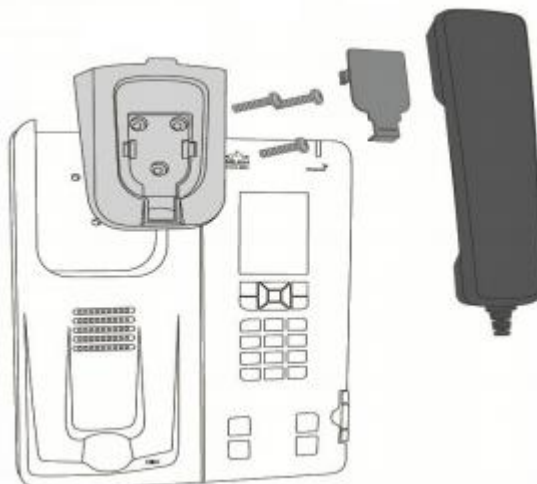
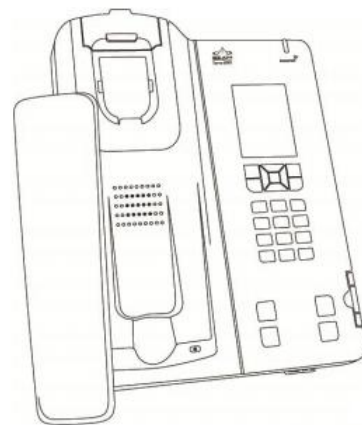
- . Supports 10 – 32V DC power Input
- . Supplied with 110/240V AC Plug pack

Cable Kits Available

- . 10 / 20m – Stock cable kits
- . 30m / 40m / 50m – Special Order

What's in the Box

- . Terra 800
- . ISD 700 Antenna
- . 110-240v AC Plug Pack (kettle cord not included)
- . 10-32v DC power lead
- . Desk mounting hand up cup (wall mounting hang up cup supplied fitted)
- . Wall mounting plate
- . USB cable
- . User Manual / Quick Start guide





TERRA 400

The Terra 400 is designed to operate on the Inmarsat "Link Phone" service package.

Terra 400 is a slim line terminal has been purposely designed for use in Fixed land based applications where the simplest access to reliable voice and data communications services is required. Featuring an intelligent RJ11/POTS interface enabling corded/cordless phones or integration to a PABX system, and inbuilt intelligence to support standard ring, busy and dial tones. Terra 400 includes, a high quality IP53 rated enclosure, USB data access and is wall mountable



Sectors & Applications

- NGO
- Remote / Communities / Offices / farms
- Emergency / Disaster recovery
- Mining
- Priority / Interim Services
- In Building

Specialised Design

- IP53 Certified enclosure (When wall mounted)
- Compact all in one design
- Wall or Desk mounting options
- USB Data access
- Rear SIM card enclosure
- Status LED Registration/ Signal / Call
- Integrated antenna connection

Intelligent POTS / RJ11 interface

- Supports up to 600m (1800') of RJ11 cable
- Dial, ring & busy tones
- Integrate easily to PABX System
- Support standard corded / cordless phones
- Auto-dial & speed dials available
- Supports up to 5 standard corded handsets

Quality

- 100% factory tested
- 12 month warranty
- Fully certified, Inmarsat, RoHS, CE, EMC, IP53 & C Tick

Physical Dimensions

- 240 x 190 x 53mm
- Operating Range: -20°C to +55°C
- Storage: -30°C to +80°C
- Humidity: <- 75% RH



Antenna Included

- Beam Passive Fixed Land antenna
- Inmarsat / GPS - ISD700

Power

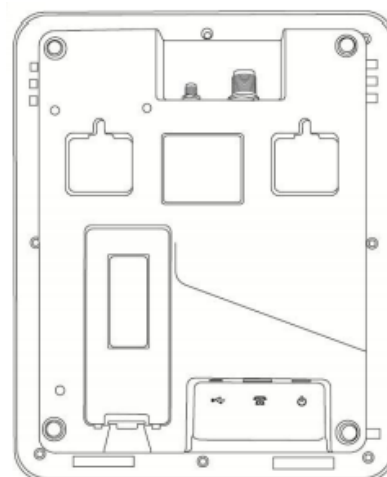
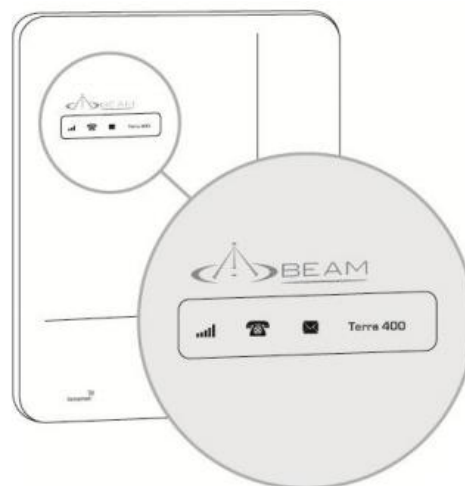
- Supports 10 – 32V DC power Input
- Supplied with 110/240V AC Plug pack

Cable Kits Available

- 10 / 20m – Stock cable kits
- 30m / 40m / 50m – Special Order

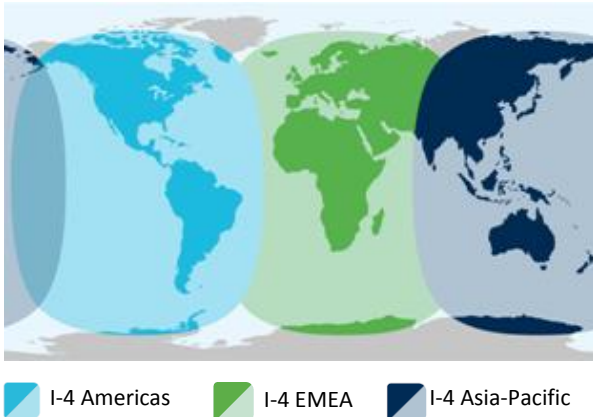
What's in the Box

- Terra 400
- ISD 700 Antenna
- 110-240v AC Plug Pack (kettle cord not included)
- 10-32v DC power lead
- Wall mounting plate
- USB cable
- User Manual / Quick Start guide





Inmarsat Coverage



Reliable connection

Connects over the Inmarsat-4 geostationary satellites, offering 99.9 per cent network availability.

Clear voice quality

Dependable, high-quality voice telephony comparable with GSM mobile cellular phones.

Global coverage

IsatPhone Link works worldwide, except for the poles, so there are no roaming charges – wherever you make your call.

The Inmarsat network uses three geostationary satellites to provide voice and data communication services almost anywhere in the world. Each satellite is equipped with a single global beam that covers up to one-third of the Earth's surface. Because Inmarsat coverage extends from latitudes of -82° to 82° regardless of longitude, higher latitudes will have lower performance. Registration to the network requires a clear line of sight to the equator and may not be suitable for use in canyons or mountains.

The map above depicts the three I-4 satellite coverage regions.

This map depicts Inmarsat's expectations of coverage, but does not represent a guarantee of service. The availability of service at the edge of coverage areas fluctuates depending on various conditions.

National regulatory conditions may apply. Coverage does not cover the poles.



Comparison Chart

Oceana 800 Oceana 400 Terra 800 Terra 400

| Antenna System | | | | |
|---|---|---|---|---|
| Includes Active ISD710 Marine antenna | ✓ | ✓ | | |
| Must use Active cable kits | ✓ | ✓ | | |
| Includes Passive directional ISD700 antenna | | | ✓ | ✓ |
| Must use Passive cable kits | | | ✓ | ✓ |
| RJ11/POTS Interface on Dock | | | | |
| POTS / RJ11 | ✓ | ✓ | ✓ | ✓ |
| Supports integration with a PABX | ✓ | ✓ | ✓ | ✓ |
| Supports 5 Corded / Cordless & DECT H/Sets | ✓ | ✓ | ✓ | ✓ |
| Dial, Ring and Busy tones | ✓ | ✓ | ✓ | ✓ |
| Supports up to 600m / 2000' of RJ11 | ✓ | ✓ | ✓ | ✓ |
| Auto Dials and Speed dials available | ✓ | ✓ | ✓ | ✓ |
| Phone Features | | | | |
| Colour LCD display | ✓ | | ✓ | |
| Supports Phone Book feature | ✓ | | ✓ | |
| Hands Free Speaker phone | ✓ | | ✓ | |
| Active Privacy handset included | ✓ | | ✓ | |
| SMS Short Message Service | ✓ | | ✓ | |
| Bluetooth headsets supported (not included) | ✓ | | ✓ | |
| Single SIM card enclosure | | ✓ | | ✓ |
| Dual SIM card enclosures | ✓ | | ✓ | |
| USB Data Port | ✓ | ✓ | ✓ | ✓ |
| Tracking / Instant Messaging | | | | |
| Dedicated In built GPS | ✓ | | | |
| Supports periodic position messages | ✓ | | | |
| Manual Position send via Track Button | ✓ | | | |
| Instant Priority Position Message Button | ✓ | | | |
| Remote position polling via SMS | ✓ | | | |
| Digital I/O x 1 (can be 2 x outputs) | ✓ | | | ✓ |



| Mechanical | | | | |
|---|---|---|---|---|
| IP 54 Ingress Rating | ✓ | | ✓ | |
| IP 53 Ingress Rating (wall mounted) | | ✓ | | ✓ |
| TNC - GPS / SMA - GPS on Dock | ✓ | ✓ | ✓ | ✓ |
| Locking bolt for wall mounting | ✓ | | ✓ | |
| Wall or Desk Mountable | ✓ | ✓ | ✓ | ✓ |
| Status LED - Registration / Signal / Call | ✓ | ✓ | ✓ | ✓ |
| Cable routing LHS / TOP / BOTTOM | ✓ | | ✓ | |
| Power & Other | | | | |
| External Device Port | ✓ | | ✓ | |
| 10 - 32V DC Power Input | ✓ | ✓ | ✓ | ✓ |
| Includes 110/240V AC Plug Pack | ✓ | ✓ | ✓ | ✓ |
| Includes DC Power Cable | ✓ | ✓ | ✓ | ✓ |